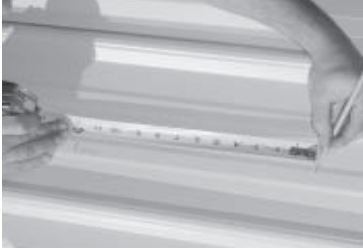
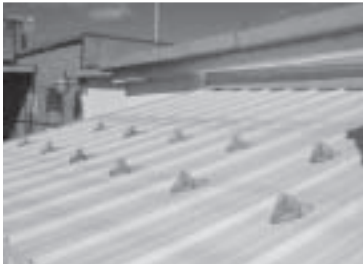




1. Remove all surface contamination such as dirt, oil, caulking, and roof mastics from the bonding area. Clean the bonding surface with alcohol. New galvanized steel may require a vinegar scrub to remove protective wax coating. Wipe the area dry before bonding.



2. Mark the position of each part before starting the installation. Lay out the **SNOWSHOES** with a tape measure in two staggered lines, approximately two feet apart horizontally and two feet apart vertically. To help prevent ice dams, set the first row no less than one foot above the plane of the exterior wall.*



3. Roofs with a 6/12 pitch or greater require a third staggered row of **SNOWSHOES**. Also, if the distance from the roof edge to the peak is thirty feet or greater (regardless of slope), two additional staggered rows of **SNOWSHOES** should be installed at the mid-point. It is also recommended that **SNOWSHOES** be installed over all doorways and roof valley areas for added protection.



4. Apply enough **DURASIL** adhesive to coat the entire bottom of the **SNOWSHOE**. Evenly tool the adhesive with the wooden applicator, so that a sufficient amount will bridge all gaps on textured surfaces.



5. Press the **SNOWSHOE** firmly in place, with the pointed end down, above the positioning mark. Press until excess adhesive is uniformly squeezed out around the edges and through vent holes. Transfer the excess adhesive to the bottom of the next **SNOWSHOE**.



6. Apply a small bead of **DURASIL** adhesive around the perimeter of the **SNOWSHOE** to seal the edges.



7. Tool off excessive adhesive from the top of the **SNOWSHOE**. Carefully tool the edges with the wooden applicator at a 45 degree angle to form a smooth, continuous fillet. At least three days of 40 degrees F are required for **DURASIL** adhesive to set. Depending on temperature, **SNOWSHOE** installations develop full strength in seven to fourteen days.

FOR PROFESSIONAL USE ONLY

* CHEM LINK, Inc. is not responsible for determining the structural integrity or live load capacity of any roof on which SnowShoes are installed. That service shall be conducted by an architect or consultant.



SNOWSLIDES!

WITH **SNOWSHOES™**

Dangerous snow slides can occur when ice and snow build up on pitched roofs. Help reduce the possibility of personal injury or property damage by installing **SNOWSHOES** on sloped roof areas.

SNOWSHOES are molded from a tough polycarbonate polymer that can withstand heavy impacts at low temperatures. Effective on all metals, including Kynar-coated metal. Also for use on slate, tile, EPDM rubber and PVC membrane.

SNOWSHOES are designed with a unique "stealth" profile to be strong and inconspicuous. They are molded with a translucent matt finish that picks up the background color of roofing materials without reflecting sunlight. The surface is receptive to paint if strict color matching is required.



SNOWSHOES are 6" X 3 1/2" x 2". Available in two colors:

Clear -- for light roofs

Smoke -- for dark roofs

FIELD PACK contains 24 **SNOWSHOES** and three tubes **DURASIL** adhesive.

Installation is easy with translucent **DURASIL** adhesive provided in every kit. No screws or mechanical fasteners (that punch holes in a roof, and lead to leaks and corrosion) are ever required. **DURASIL** bonds aggressively to all roofing materials, including Kynar finishes. It bridges irregularities and will never shrink.